

Olivehurst Public Utility District



Agenda Item Staff Report

Meeting Date: September 19, 2019

Item description/summary:

Treasurer's Report June 30, 2019 : Monthly Budget to Actual Report shows actual revenues and expenses compared to the Board approved budget. OPUD uses accrual accounting and revenue & expenditures can be recognized at different times than cash flows. Additional information is needed to provide information about the District's cash position. The attached Treasurer's Report shows the District's cash basis as of June 30, 2019.

Fiscal Analysis:

Cash is invested with Yuba County, with the exception of CFD 2002-1's Bond Reserve account with US Bank. The District's cash position with Yuba County increased by \$4.7 million from June 2018 to June 2019. The increase is primarily due to the collection of Capacity fees in both Water and Waste Water and Park fees.

Water Fund: Operating cash shows a deficit of (\$158,293) for June 30, 2019. The deficit is short term, and caused by the timing delays in collections of average monthly billings of \$295,000. The shortfall is becoming smaller with the new fee structure and improvement in collection procedures by staff (Treasurer's Report June 2019, page 4).

Water Capacity Fees: Payment is due to PLOG for reimbursement of Well #34. The outstanding balance on is \$3,635,195. Capacity fees of \$1,128,515 were collected from development in the North Plumas Lake system. South Plumas Lake's collections were limited to the administrative portion on fee-credited parcels.

Employee Feedback

Sample Motion:

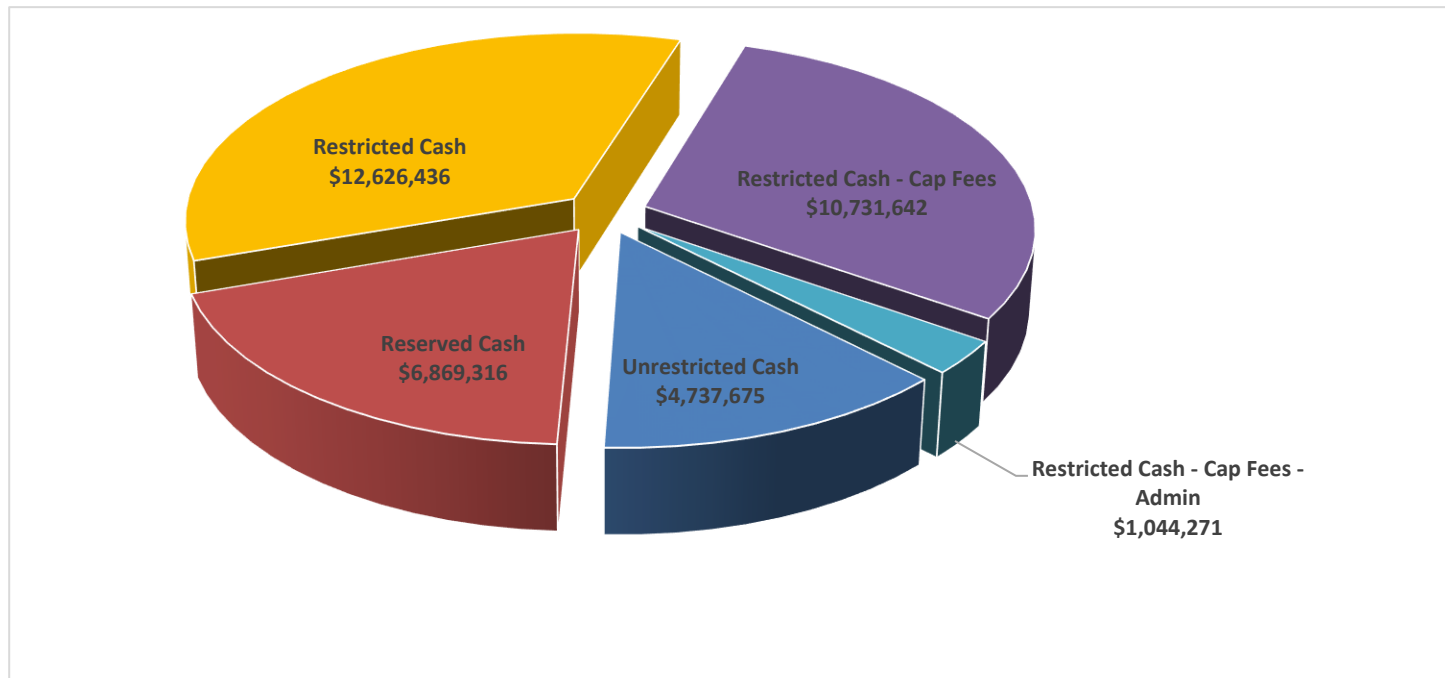
Informational item

Prepared by:

Karin Helvey, Financial Manager

June 2019 Treasurer's Report

Unrestricted Cash	4,737,675	<i>Operating Cash</i>
Reserved Cash	6,869,316	<i>Reserves</i>
Restricted Cash	12,626,436	<i>CFD 2002-1 Assessments, Park fees</i>
Restricted Cash - Cap Fees	10,731,642	<i>Capacity Fees (Water & Waste Water)</i>
Restricted Cash - Cap Fees - Admin	1,044,271	<i>Capacity Fees - Administrative Allowance</i>
Total Cash	\$36,009,340	



All Funds are invested with the Yuba County Treasurer's LAIF account

OLIVEHURST PUBLIC UTILITY DISTRICT

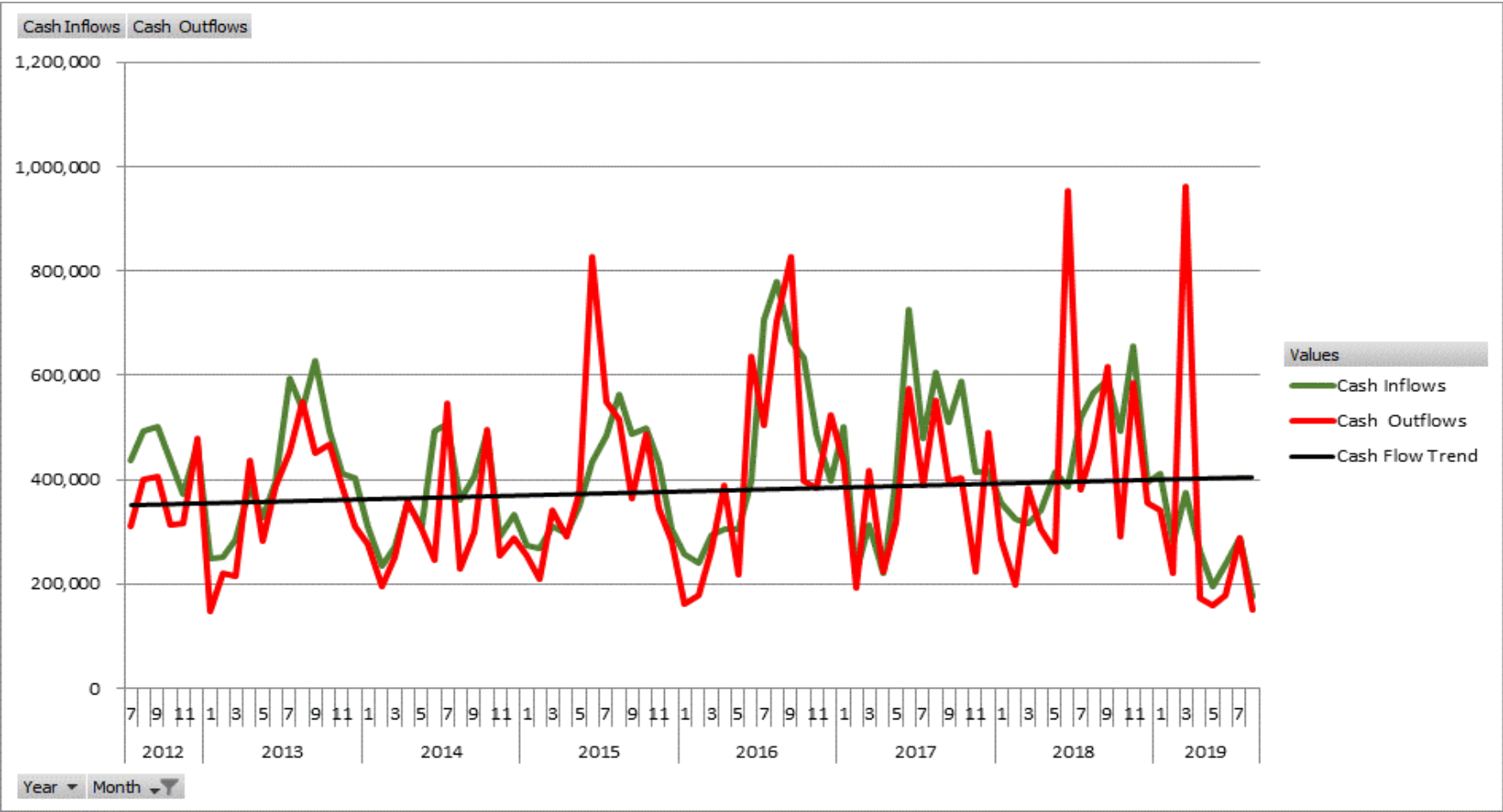
Treasurer's Report March 31, 2019

			June-17	June-18	June-19
Administration	Unrestricted	Operating	2,192,913	1,892,223	2,008,760
	Reserved	Consolidation Cash	1,189,325	1,096,532	1,096,532
	Reserved	Reserve for Depreciation	423,031	423,031	423,031
	Reserved	Compensated Absences-all Departments	131,853	131,853	131,853
	Restricted	Advance Payments	106,204	43,900	36,501
	Restricted	Customer Deposits	130,051	142,002	93,813
	Restricted	Developer Deposits	33,442	33,442	57,188
	Restricted	Developer Deposits (Plumas Lake)	239,063	142,412	160,682
Fire	Unrestricted	Operating	621,543	741,116.91	774,790
	Reserved	Capital Outlay Expenditures	61,900	61,900	61,900
	Reserved	Future Unemployment Expense	26,000	26,000	26,000
	Reserved	Vehicle Replacement	20,000	20,000	20,000
	Reserved	Reserve for Depreciation	13,118	13,118	26,236
	Restricted	Fire Mitigation Fees	277,715	284,676	50,386
Pool	Unrestricted	Operating	-	-	(8,688)
Parks OH	Unrestricted	Operating	15,900	42,134	51,210
	Reserved	Equipment Replacement	99,050	66,495	62,375
	Reserved	Reserve for Depreciation	22,500	44,756	49,756
Parks CSA 66	Unrestricted	Operating	1,073,449	1,007,014	1,008,562
	Reserved	Equipment Replacement	102,345	102,345	102,345
	Reserved	Reserve for Depreciation	50,000	50,000	130,000
	Reserved	Future Park Maintenance	140,000	390,000	424,000
	Reserved	Pinkerton Park Fee Credits	519,910	519,910	519,910
Youth Building	Unrestricted	Operating	-	-	(1,299)
Lighting	Unrestricted	Operating	133,268	131,007	166,298
			7,326,694	7,405,866	7,472,140

OLIVEHURST PUBLIC UTILITY DISTRICT

Water	Unrestricted	Operating Cash	(915,769)	(296,821)	(158,293)
	Restricted - CAP Fees	Water Cap Fees	1,301,863	1,745,203	2,191,813
	Restricted - CAP Fees - Admin	Water Cap Fees - Admin.	188,045	198,898	218,942
Waste Water	Unrestricted	Operating Cash	650,671	1,025,967	896,336
	Reserved	Reserve for Depreciation	1,000,000	1,300,000	1,900,000
	Reserved	Reserve for Capital Replacement	1,731,369	1,895,379	1,895,379
	Restricted - CAP Fees - Admin	WWTF CAP FEES - Admin Share	725,865	758,180	825,329
	Restricted - CAP Fees	WWTF CAP FEES - ALL - YUBA COUNTY	4,535,705	5,757,749	7,522,867
	Restricted - CAP Fees	SWR COLLECT SYS FEES - NPL - YUBA C	108,616	153,943	659,013
	Restricted - CAP Fees	SWR COLLECT SYS - SPL - YUBA COUNT	88,589	81,512	107,589
	Restricted - CAP Fees	SWR COLLECT SYS - HOH - YUBA COUN	27,545	32,533	250,359
CFD 2002-1	Restricted	Fiduciary	5,322,030	5,407,239	4,060,347
CFD 2001-5	Restricted	Fiduciary	858,050	857,093.97	857,094
CFD 2005-2	Restricted	Agency	243,102	24,799.97	854
Park Fund	Restricted	Agency	3,740,322	4,943,653	7,309,570
Total Yuba County Treasury Cash			\$ 26,932,696	\$ 31,291,194	\$ 36,009,340
	OTHER CASH				
CFD 2002-1	Restricted	US Bank Bond Reserves	868,292	868,292	295,007

Water Operating Fund Cash Flows 2012 - current



Olivehurst Public Utility District

Fees Collected	Neighborhood Parks	Community Park	Community Center	Administrative Fees	Total
	8,320,245.964	3,021,047.661	1,408,880.001	296,170.174	13,046,343.800
Interest	622,259.503	237,641.483	109,380.520	21,022.260	
	8,942,505.467	3,258,689.144	1,518,260.521	317,192.434	13,046,343.800
Expended					
Admin Fees OPUD				80,028.000	
Admin Fees County				40,570.000	
Bear River Park	969,655.520				
Don Brown Park	471,067.520				
Eufay Park	2,266,404.090				
Veterans Park	1,196,073.720				
Beazer Mini Parks	106,424.000				
Wheeler Ranch Parks	714,563.050				
RDO Shade Structure	50,000.000				
Refunds Lennar-US homes	304,023.510				
Refund KB	184,258.000				
Miscellaneous Park Outlay	315,544.860				
MTW-Wheeler Ranch Services					
MTW Community Park					
Feasibility Study				28,465.000	
	6,578,014.270			149,063.000	6,727,077.270
Balance	\$2,364,491	\$3,258,689	\$1,518,261	\$168,129	\$7,309,570

Park Fee Allocation

- 63% Neighborhood Parks
- 21% Community Park
- 14% Community Center
- 2% Administrative Fees

6,808 X.35=\$2,275 440 lots add \$1 Million to Community Park and Center

6,808 X.21=\$1,430 700 lots add \$1 Million to Community Park